

# Optimum Brasses Ltd.

## Kitchen & Home Hardware Collection







# The Story

Optimum Brasses was founded in 1981 by antique dealer and restorer - Robert Byles. Originally the company's main objective was to provide hardware that replicated authentic antique pieces to the antique restoration trade. This was achieved by using a specially formulated brass composition and using the lost wax casting technique to replicate the intricate detail on period hardware. This casting method is still used today.

The company is now employee owned by a team of dedicated workers who have put their heart and soul into growing the company and expanding the product range significantly; building on the original 1981 foundations of the business that make Optimum Brasses so unique.

Optimum Brasses are now a prominent well known name in the world of interior design, home renovation and antique furniture restoration, supplying beautiful hand finished hardware for projects worldwide. Not only will you find Optimum's hardware in homes and commercial buildings (including grade 1 listed), you may also spot the brassware in some big well known movies.

Optimum Brasses offers the results & reliability you would expect from a larger brand, with the quality, care and personal touch of a small employee owned business.



# Contents

---

Page 7-8	Bar Handles
Page 9-11	Cup Handles
Page 11-13	Lifting & Swan Neck Handles
Page 15-19	Plain Knobs
Page 21-25	Decorated Knobs
Page 26-27	Door Knobs & Handles
Page 29-30	Hooks
Page 31-32	Tiles
Page 33	Extras
Page 34	Choosing a Brass Finish
Page 35	Bronze & White Bronze
Page 36	Credits
Page 37	Index
Page 38	Customer Work

# The Collection



Credit: Heidi Skoglund  
Full details page 36



# Bar Handles



## C223

Medium sized, mid 20th century style bar handle.

**Length:** 6 15/16" (176mm)  
**Width at base:** 3/4" (18mm)  
**Width at centre:** 1/2" (13mm)  
**Projection:** 1 1/16" (26mm)  
**OR** 1 5/16" (33mm)  
**Centre to centre:** 5 7/8" (149mm)  
**Weight:** 127g

**Fitted sleeve nuts included**



## C224

Small mid 20th century style bar handle.

**Length:** 4 7/8" (125mm)  
**Width at base:** 1/2" (14mm)  
**Width at centre:** 3/8" (9mm)  
**Projection:** 1" (26mm)  
**Centre to centre:** 4" (101mm)  
**Weight:** 72g

**Fitted sleeve nuts included**



## C225

Mid 20th century style bar handle, the smallest in the collection.

**Length:** 4 3/8" (112mm)  
**Width at base:** 3/4" (18mm)  
**Width at centre:** 3/8" (10mm)  
**Projection:** 1" (26mm)  
**Centre to centre:** 15/16" (100mm)  
**Weight:** 72g

**Fitted sleeve nuts included**



## C262 - Round Fitting

Plain curved bar handle, with round fitting design.

**Length:** 9 3/4" (246mm) **OR** 12 3/4" (323mm)  
**Width:** 1/2" (12mm)  
**Projection:** 1 3/8" (35mm)  
**Centre to centre:** 8 5/16" (185mm) **OR** 9 9/16" (217mm)  
**Weight:** 237g **OR** 282g

**Fitted sleeve nuts included**



# Bar Handles



## C262 - Cone Fitting

Plain curved bar handle with cone design fittings.

**Length:** 9 3/4" (246mm) OR 12 3/4" (323mm)

**Width:** 1/2" (12mm)

**Projection:** 1 3/8" (35mm)

**Centre to centre:** 8 5/16" (185mm) OR 9 9/16" (217mm)

**Weight:** 321g OR 366g

**Fitted sleeve nuts included**



## C263 - Rectangular Fitting

Patterned rectangular bar handle with rectangular design fittings.

**Length:** 9 3/4" (246mm) OR 12 3/4" (323mm)

**Width:** 1/2" (12mm)

**Projection:** 1 7/16" (36mm)

**Centre to centre:** 8 5/16" (185mm) OR 9 9/16" (217mm)

**Weight:** 255g OR 312g

**Fitted sleeve nuts included**



## C263 - Cone Fitting

Patterned rectangular bar handle with cone design fittings.

**Length:** 9 3/4" (246mm) OR 12 3/4" (323mm)

**Width:** 1/2" (12mm)

**Projection:** 1 7/16" (36mm)

**Centre to centre:** 8 5/16" (185mm) OR 9 9/16" (217mm)

**Weight:** 326g OR 383g

**Fitted sleeve nuts included**



## C266

Large mid 20th century style bar handle.

**Length:** 9 7/8" (260mm) OR 12 1/4" (311mm)

**Width at base:** 3/4" (20mm)

**Width at centre:** 9/16" (15mm)

**Projection:** 1 1/16" (26mm) OR 1 5/16" (33mm)

**Centre to centre:**

**Weight:** 174g OR 246g

**Fitted sleeve nuts included**

# Cup Handles



**C218**

A simple pull copied from a late Victorian drawer handle.

**Length:** 4 1/4" (106mm)  
**Width:** 1 9/16" (39mm)  
**Projection:** 3/4" (20mm)  
**Weight:** 70g



**C219**

Copied from a 19th century cup handle with a buckle and strap pattern.

**Length:** 4 3/16" (105mm)  
**Width:** 1 7/16" (37mm)  
**Projection:** 3/4" (20mm)  
**Weight:** 62g



**C220**

This decorated drawer pull is copied from a late Victorian example, found on a roll-top desk.

**Length:** 4 1/4" (107mm)  
**Width:** 1 3/8" (37mm)  
**Projection:** 3/4" (18mm)  
**Weight:** 88g



**C221**

A sunburst patterned drawer pull, with decorated top surround, copied from an Edwardian original.

**Length:** 3 3/4" (95mm)  
**Width:** 1 7/16" (37mm)  
**Projection:** 11/16" (17mm)  
**Weight:** 28g





# Cup Handles



**C228**

Copied from a large Victorian cup handle with full surround.

**Length:** 4 7/8" (123mm)  
**Width:** 3 1/16" (78mm)  
**Projection:** 15/16" (23mm)  
**Weight:** 199g



**C237**

Scallop shell style cup handle.

**Length:** 3 3/16" (81mm)  
**Width:** 1 1/2" (37mm)  
**Projection:** 3/4" (18mm)  
**Weight:** 23g



**C238**

Plain cup handle with top surround.

**Length:** 3 7/16" (87mm)  
**Width:** 1 7/16" (36mm)  
**Projection:** 7/8" (22mm)  
**Weight:** 48g



**C239**

Small cup handle with top surround.

**Length:** 2 13/16" (71mm)  
**Width:** 11/16" (27mm)  
**Projection:** 5/8" (16mm)  
**Weight:** 19g



# Cup Handles



**C249**

This smooth, wavy bottom cup handle is copied from a late Victorian original

**Length:** 3 15/16" (100mm)

**Width:** 1 1/4" (33mm)

**Projection:** 9/16" (15mm)

**Weight:** 53g



## Lifting & Swan Neck Handles



**A178**

Copied from a late Georgian period original. It has large round backplates with broad moulded edges.

**Backplate diameter:** 1 3/8" (35mm)

**Centre to centre:** 4 1/4" (108mm)

**Weight:** 70g



**A179**

Copied from a late Georgian period original with oval, milled edged backplates.

**Backplate height:** 1 1/2" (38mm)

**Backplate width:** 1 1/16" (27mm)

**Centre to centre:** 4 1/4" (108mm)

**Weight:** 70g





# Lifting & Swan Neck Handles



**A198**

Copied from an original that we believe dates back to the 1750s. This handle does have a slightly asymmetrical appearance as seen in the top image..

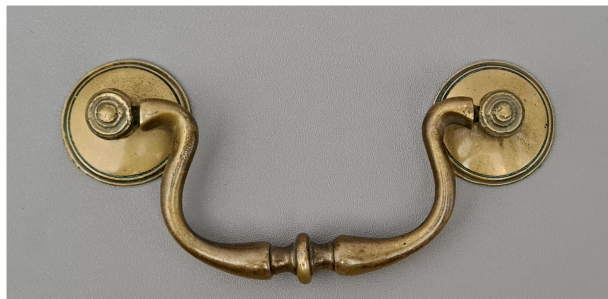
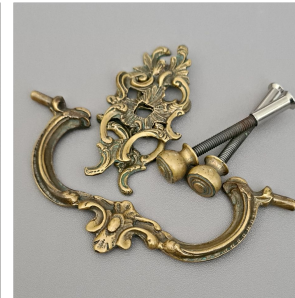
**Backplate diameter:** 1 15/16" (49mm)  
**Centre to centre:** 5" (127mm)  
**Weight:** 251g



**A207**

A rococo handle copied from an a mid 18th century original. It has a double sided loop and pierced foliate backplates.

**Backplate height:** 2 1/2" (63mm)  
**Backplate width:** 1 1/4" (32mm)  
**Centre to centre:** 3 3/4" (95mm)  
**Weight:** 72g



**C46**

Copied from a mid 18th century knopped swan neck handle.

**Backplate diameter:** 1 3/16" (30mm)  
**Centre to centre:** 3 1/2" (88mm)  
**Weight:** 67g



**C50**

Copied from an original c.1770, with oval, acanthus, beaded, backplates.

**Backplate height:** 1 9/16" (39mm)  
**Backplate width:** 1 1/4" (31mm)  
**Centre to centre:** 4" (102mm)  
**Weight:** 86g





# Lifting & Swan Neck Handles



## C110

Copied from a very small D shaped late 18th century handle with oval plates and integral stops to prevent the loop from lifting more than 90 degrees.



**Backplate height:** 1 3/16"  
(30mm)  
**Backplate width:** 7/8"  
(23mm)  
**Centre to centre:** 2 5/8"  
(66mm)  
**Weight:** 30g



## C222

Copied from an early 19th century handle.

**Backplate height:** 1 3/4"  
(44mm)  
**Backplate width:** 1 3/16"  
(30mm)  
**Centre to centre:** 4"  
(103mm)  
**Weight:** 98g



## Steel Thread Posts

A large selection of our handles now support steel thread posts, making them suitable for daily use in the home. A small number are featured in this catalogue but a full range of these handles can be found on our website in our Kitchen and Home Hardware category.





Credit: Vinycomb Bate  
Full details page 36



# Plain Knobs



## A54

Copied from a small flat headed plain knob c.1730+.

**Diameter:** 7/8" (21mm)

**Projection:** 11/16" (17mm)

**Weight:** 21g



## A55

Copied from a mid-sized flat headed plain knob c.1730+

**Diameter:** 1 1/8" (29mm)

**Projection:** 15/16" (23mm)

**Weight:** 24g



## A56 - Exposed Steel Thread

Copied from an oval knob c.1690+ with an integral backplate. The steel thread is exposed on the face of the knob as shown in the image.

**Width x length:** 1" (25mm) x 1 1/8" (30mm)

**Projection:** 1 3/8" (34mm)

**Weight:** 41g



## A56 - Plain

Copied from an oval knob c.1690+ with an integral backplate.

**Width x length:** 1" (25mm) x 1 1/8" (30mm)

**Projection:** 1 3/8" (34mm)

**Weight:** 41g



# Plain Knobs



## A57

A round headed knob with backplate, the original is expected to date back to the 19th century.

**Diameter:** 1" (26mm)

**Backplate diameter:** 1 1/8" (28mm)

**Projection:** 1 1/16" (27mm)

**Weight:** 75g



## A58 - Exposed Steel Thread

Copied from an oval knob c.1690+. The steel thread is exposed on the face of the knob as shown in the image.

**Width x length:** 1 3/16" (30mm) x 1 9/16" (39mm)

**Projection:** 1 5/8" (40mm)

**Weight:** 148g



## A58 - Plain

Copied from an oval knob c.1690+.

**Width x length:** 1 3/16" (30mm) x 1 9/16" (39mm)

**Projection:** 1 5/8" (40mm)

**Weight:** 148g



## B7 - Exposed Steel Thread

Copied from an 18th century large bun knob with backplate. The steel thread is exposed on the face of the knob as shown in the image.

**Diameter:** 1 7/16" (36mm)

**Backplate diameter:** 1 7/16" (36mm)

**Projection:** 1 1/4" (32mm)

**Weight:** 150g





# Plain Knobs



## B7 - Plain

Copied from an 18th century large bun knob with backplate.

**Diameter:** 1 7/16" (36mm)  
**Backplate diameter:** 1 7/16" (36mm)  
**Projection:** 1 1/4" (32mm)  
**Weight:** 150g



## C19

Copied from a plain, flatter style, mid 18th century knob.

**Diameter:** 1 3/16" (30mm)  
**Projection:** 15/16" (23mm)  
**Weight:** 36g



## C20

Copied from an 18th century round knob.

**Diameter:** 1 3/16" (30mm)  
**Backplate diameter:** 1 3/16" (30mm)  
**Projection:** 1 1/16" (26mm)  
**Weight:** 36g



## C234

A large plain oval knob, copied from a Victorian original.

**Width x length:** 1 1/4" (32mm) x 2 1/4" (57mm)  
**Projection:** 1 3/4" (43mm)  
**Weight:** 186g





# Plain Knobs



**C235**

A plain, mid-sized oval knob, copied from a Victorian original.

**Width x length:** 13/16" (20mm) x 1 13/16" (45mm)  
**Projection:** 1 7/8" (47mm)  
**Weight:** 97g



**C236**

A mid-sized plain knob, copied from a Victorian original.

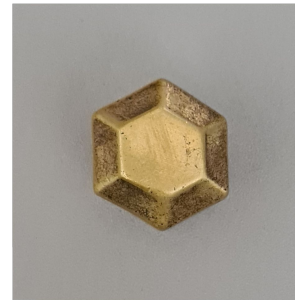
**Diameter:** 1 1/16" (26mm)  
**Projection:** 1 1/4" (31mm)  
**Weight:** 72g



**C250**

Flat top knob with a very faint roped pattern on the outer rim. Copied from an original believed to be of the Victorian era.

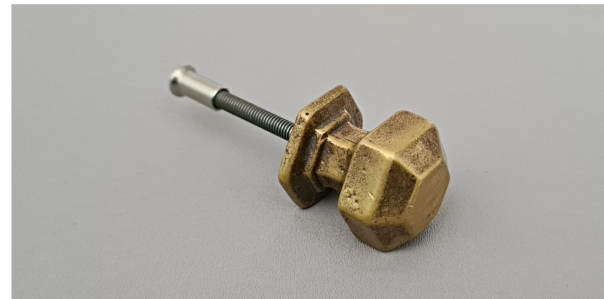
**Diameter:** 7/8" (22mm)  
**Projection:** 3/4" (18mm)  
**Weight:** 27g



**C251**

A solid plain, hexagonal knob. Copied from an original we believe dates back to the Georgian era.

**Diameter (edge to edge):** 15/16" (22mm)  
**Diameter (point to point):** 1" (25mm)  
**Projection:** 1 1/16" (25mm)  
**Weight:** 36g



# Plain Knobs



**C252**

A plain, mid-sized round knob, copied from a Victorian original.

**Diameter:** 1" (25mm)  
**Projection:** 1" (25mm)  
**Weight:** 61g



**C265 - Exposed Thread**

Copied from an 18th century round knob featuring two simple rings on the face, with an exposed steel thread.

**Diameter:** 1 1/16" (26mm)  
**Projection:** 1 1/2" (37mm)  
**Weight:** 88g



**C265 - Plain**

Copied from an 18th century round knob featuring two simple rings on the face.

**Diameter:** 1 1/16" (26mm)  
**Projection:** 1 1/2" (37mm)  
**Weight:** 88g



**C270**

A mid-sized plain round knob & backplate, copied from an 18th century original.

**Diameter:** 1 5/16" (34mm)  
**Backplate diameter:** 1 3/8" (35mm)  
**Projection:** 1 1/8" (28mm)  
**Weight:** 113g







**Design: Athena Calderone Imagery: Sarah Elliot Photography**  
**Full details page 36**

# Decorated Knobs



**A243**

Taken from a Sheraton style original c.1800, the front face is decorated with a spiral acanthus pattern & beaded rim.

**Diameter:** 1 1/8" (27mm)  
**Backplate diameter:** 1 3/16" (28mm)  
**Projection:** 3/4" (17mm)  
**Weight:** 38g



**A244**

Taken from a Sheraton period furniture knob and backplate, featuring a spiral acanthus pattern and a beaded rim.

**Diameter:** 1 9/16" (40mm)  
**Backplate diameter:** 1 9/16" (40mm)  
**Projection:** 1" (25mm)  
**Weight:** 99g



**B57**

Copied from a Regency original with star backplate.

**Knob diameter:** 5/8" (16mm)  
**Backplate diameter:** 1 1/2" (38mm)  
**Projection:** 1/2" (13mm)  
**Weight:** 15g



**B62**

Copied from an early Regency period knob with a lion face and Greek Key pattern border.

**Knob diameter:** 1 1/4" (32mm)  
**Backplate diameter:** 1 3/16" (30mm)  
**Projection:** 7/8" (22mm)  
**Weight:** 62g





# Decorated Knobs



## C93

Copied from a mid-sized late 18th century Sheraton knob.

**Diameter:** 1 1/4" (31mm)  
**Backplate diameter:** 1 1/4" (31mm)  
**Projection:** 1 1/16" (26mm)  
**Weight:** 81g



## C94

Copied from a late 18th century highly decorated knob.

**Diameter:** 1 1/16" (27mm)  
**Backplate diameter:** 1 5/16" (33mm)  
**Projection:** 1 1/16" (27mm)  
**Weight:** 63g



## C95

Copied from a large Regency period original.

**Diameter:** 1 7/8" (46mm)  
**Backplate diameter:** 1 15/16" (48mm)  
**Projection:** 1 1/2" (37mm)  
**Weight:** 206g



## C96

Copied from an early 1800s original with a plain domed centre.

**Diameter:** 1 3/16" (30mm)  
**Backplate diameter:** 1 3/16" (30mm)  
**Projection:** 13/16" (22mm)  
**Weight:** 60g





# Decorated Knobs



## C104

Copied from a small early 1800s original with a Tudor Rose patterned front and a smaller backplate.

**Diameter:** 1" (25mm)

**Backplate diameter:** 13/16" (20mm)

**Projection:** 9/16" (14mm)

**Weight:** 17g



## C105

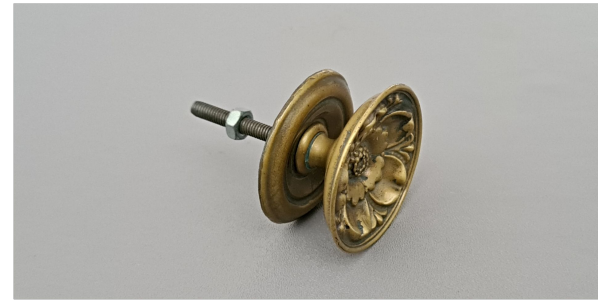
Copied from an early 1800s Tudor Rose pattern original.

**Diameter:** 1 1/2" (38mm)

**Backplate diameter:** 1 7/16" (36mm)

**Projection:** 3/4" (19mm)

**Weight:** 45g



## C233

Copied from a mid-sized late 18th century Sheraton knob.

**Diameter:** 1 5/8" (42mm)

**Backplate diameter:** 1 5/8" (42mm)

**Projection:** 1 1/8" (30mm)

**Weight:** 119g



## C248

This solid brass knob boasts a stunningly unique oval swirl design; copied from an original we believe dates back to the Regency era.

**Width x length:** 1 9/16" (40mm) x 2 1/16" (53mm)

**Projection:** 1 1/2" (37mm)

**Weight:** 180g



# Decorated Knobs



## C253

Copied from a concave, dome centered knob, dating back to the early 1800s.

**Diameter:** 1 1/4" (32mm)  
**Projection:** 13/16" (21mm)  
**Weight:** 45g



## C254

Copied from a dome centered knob, dating back to the early 1800s.

**Diameter:** 1 1/4" (31mm)  
**Projection:** 1" (25mm)  
**Weight:** 59g



## C256

A relatively large decorated knob, copied from an early 19th century original.

**Diameter:** 1 7/16" (37mm)  
**Projection:** 1" (25mm)  
**Weight:** 77g



## C257

A highly decorated brass knob, copied from a Victorian original.

**Diameter:** 1 1/4" (32mm)  
**Projection:** 7/8" (22mm)  
**Weight:** 66g





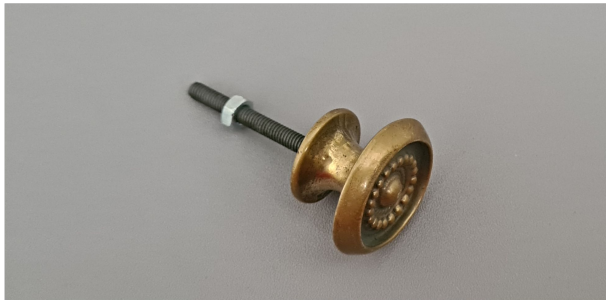
# Decorated Knobs



**C258**

A delicately decorated brass knob, copied from a Victorian original.

**Diameter:** 1 1/8" (29mm)  
**Projection:** 3/4" (18mm)  
**Weight:** 35g



**C259**

Copied from a dome centered knob, with an almost spinning top like resemblance. We believe the original dates back to the Edwardian era.

**Diameter:** 1" (25mm)  
**Projection:** 1" (25mm)  
**Weight:** 41g



**C261**

Copied from an early Regency knob with a star centre and a Greek Key border.

**Knob Diameter:** 1 1/16" (28mm)  
**Projection:** 11/16" (19mm)  
**Weight:** 37g



# Door Knobs & Handles



## A261

A box lock door handle copied from a mid 18th century example.

You may purchase this item as standard (with small integrated backplate), or it is also available to be purchased with a steel thread and the addition of a bigger backplate for better support (fitting screws provided).

Alternatively you may purchase as a pair of door handles with backplates and spindle included.

**Drop width:** 2 1/8" (54mm)

**Drop from axle:** 1 7/8" (48mm)

**Integral backplate diameter:** 13/16" (20mm)

**Backplate diameter:** 1 13/16" (46mm)



## C211

Copied from a large 18th century box lock handle with an integral back plate.

As standard this item is supplied with a removable pivot screw which also secures a shaped end of a spindle. You may purchase this item as standard or it is also available to be purchased with a steel thread and the addition of a bigger backplate for better support (fitting screws provided).

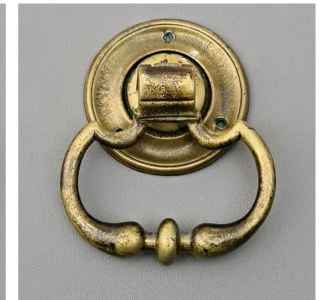
Alternatively you may purchase as a pair of door handles with backplates and spindle included.

**Drop width:** 2 1/2" (64mm)

**Drop from axle:** 2 1/16" (53mm)

**Integral backplate diameter:** 1" (25mm)

**Backplate diameter:** 2 1/16" (52mm)





# Door Knobs & Handles



## C209

Copied from an early 19th century house door-knob and backplate with a star motif.

C210 escutcheon matches (page 33).



**Knob diameter:** 2" (51mm)  
**Projection:** 1 7/8" (48mm)  
**Backplate diameter:** 2 1/16" (52mm)  
**Weight:** 309g



## C267

This unique segmented house door knob, is copied from a period original we believe dates back to the Regency era.

**Knob diameter:** 2" (51mm)  
**Projection:** 2 3/4" (70mm)  
**Backplate diameter:** 2 1/2" (62mm)  
**Weight:** 417g



## C268

This beautiful door knob is copied from a Georgian style original. The top is adorned with a circular ring pattern which is very typical of this time period.

**Knob diameter:** 2 1/8" (54mm)  
**Projection:** 2 1/2" (63mm)  
**Backplate diameter:** 2 3/16" (55mm)  
**Weight:** 493g



## C269

This stunningly simple, oval door knob, is copied from a period original dating back to the Edwardian era.

**Knob length:** 2 7/16" (61mm)  
**Knob width:** 1 3/8" (34mm)  
**Projection:** 2 7/16" (61mm)  
**Backplate diameter:** 2 1/2" (62mm)  
**Weight:** 290g







Credit: Kelly - A Side of Sweet  
Full details page 36



# Hooks



**A263**

Dresser hook, copied from an 18th century example.

**Projection:** 1 3/16" (31mm)  
**Weight:** 8g



\*other hooks of this style are available in lengths between 21mm - 36mm



**C205**

Copied from an 18th century, rare shaped dresser hook.

**Projection:** 1 7/16" (36mm)  
**Weight:** 10g



**C217**

Copied from a Victorian hat and coat stand hook.

**Length:** 4" (100mm)  
**Projection:** 1 5/8" (93mm)  
**Backplate width:** 1 3/16" (30mm)  
**Backplate height:** 1 15/16" (50mm)  
**Weight:** 84g



**C232**

A large coat hook, copied from a Victorian original.

**Length:** 5 1/4" (133mm)  
**Projection:** 2 7/8" (74mm)  
**Backplate width:** 1 1/2" (37mm)  
**Backplate height:** 2" (52mm)  
**Weight:** 146g



# Hooks



## C255

This S hook is made from a hard brass compound to facilitate hanging heavy items.

**Length:** 2 1/8" (53mm)  
**Inside radii:** 3/4" (20mm) & 5/8" (16mm)  
**Weight:** 19g



## C260

Copied from an antique original we believe dates back to the Victorian era.

**Projection:** 5 5/8" (144mm)  
**Backplate diameter:** 1 3/4" (44mm)  
**Circle head diameter:** 1 1/4" (30mm)  
**Weight:** 196g





# Tiles



**C240**

Small tile with floral design.

**Length:** 1 1/8" (29mm)

**Width:** 1 1/8" (29mm)

**Depth:** 1/4" (6mm)

**Weight:** 49g



**C241**

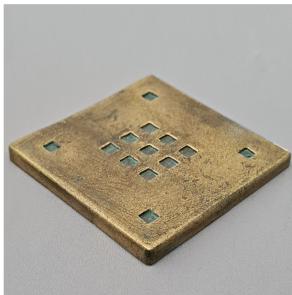
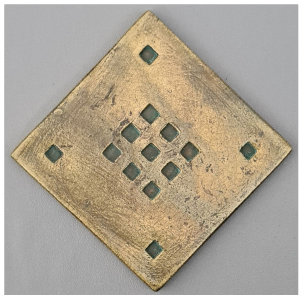
Mid size tile with delicate floral design.

**Length:** 3" (75mm)

**Width:** 3" (75mm)

**Depth:** 1/4" (6mm)

**Weight:** 253g



**C242**

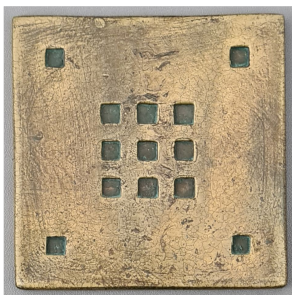
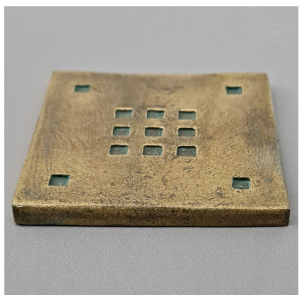
Mid size tile with intricate square design.

**Length:** 3" (75mm)

**Width:** 3" (75mm)

**Depth:** 1/4" (6mm)

**Weight:** 279g



**C243**

Mid size tile with celtic knot design.

**Length:** 3" (75mm)

**Width:** 3" (75mm)

**Depth:** 1/4" (6mm)

**Weight:** 277g



# Tiles



**C244**

Mid size tile with sun/star design.

**Length:** 3" (75mm)  
**Width:** 3" (75mm)  
**Depth:** 1/4" (6mm)  
**Weight:** 256g



**C245**

Mid size tile with large floral design.

**Length:** 3" (75mm)  
**Width:** 3" (75mm)  
**Depth:** 1/4" (6mm)  
**Weight:** 291g



**C246 & C247**

Brass tile edging strips,

**C246**

**Length:** 9 3/4" (246mm) OR 12 3/4" (323mm)  
**Width:** 1/2" (12mm)  
**Depth:** 7/16" (10mm)  
**Weight:** 203g

**C247**

**Length:** 9 3/4" (246mm) OR 12 3/4" (323mm)  
**Width:** 1/2" (12mm)  
**Depth:** 3/8" (9mm)  
**Weight:** 208g



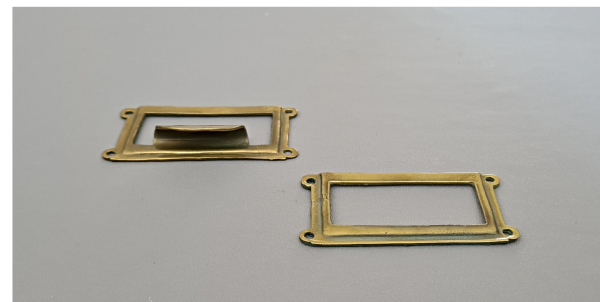




## C210

A covered escutcheon copied from an early 19th Century original for a house door, matches the C209 door knob (page 27).

**Height:** 2 3/8" (60mm)  
**Width:** 1 1/16" (27mm)  
**Keyhole height:** 1 1/16" (27mm)



## C229 (with pull) & C230 (without pull)

These Card holders were both copied from originals belonging to a vintage filing cabinet.

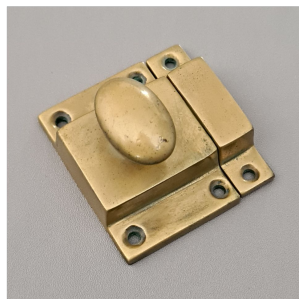
**Width:** 1 1/4" (30mm)  
**Length:** 2 1/2" (65mm)  
**Weight:** 13g (with pull) 10g (without pull)



## C231

Plain latch with oval turning mechanism.

**Width:** 2" (52mm)  
**Length:** 2 1/8" (55mm)  
**Projection:** 1 1/8" (33mm)



# Brass Finishes

Optimum Brasses offer the choice of three unlacquered brass finishing options; traditional antique, light antique & polished brass.

All the items featured in this catalogue are finished in either light or traditional antique, below are a selection of our pieces in all three finishes for comparison. Please bear in mind that different lighting/camera angles can affect the way the colour of the brass appears and each item antiques slightly differently.

**Traditional Antique  
Finish**



**Light Antique  
Finish**



**Polished  
Finish**





# Bronze & White Bronze Finishes

Optimum Brasses are pleased to be able to offer a number of our items in bronze & white bronze; a selection of these items are already available to order direct from our website. Whilst we will continue to add to this online selection, we encourage you to enquire about any other items you may wish to purchase in bronze or white bronze, as it is possible for most items in our main collection to be cast in these materials.

We are able to offer this collection in a polished finish, like our brass, all our bronze & white bronze items are unlacquered.

**Polished  
Bronze**



**Polished  
White Bronze**



# Featured Images

## Front Page

Artichoke Ltd

[www.artichoke-ltd.com/newprojects@artichoke.co.uk](http://www.artichoke-ltd.com/newprojects@artichoke.co.uk)

+44(0)1934 745 270

Instagram - @artichoke\_ltd

### Featured Item

C228 cup handle

### Finish

Light Antique Brass

## Page 6

Heidi Skoglund

Instagram - @heidi\_\_skoglund

### Featured Items

C266 bar handle

C224 bar handle

C254 decorated knob

### Finish

Light Antique Brass

## Page 14

Vinycomb Bate

[sb@vinycombbate.com](mailto:sb@vinycombbate.com)

+44(0)1452 724555

Instagram - @vinycombbate

### Featured Item

C218 Cup Handle

### Finish

Light Antique Brass

## Page 20

### Interior Design

Athena Calderone

[www.athenacalderone.com](http://www.athenacalderone.com)

Instagram - @eyeswoon

### Imagery

Sarah Elliott Photography

<http://sarahelliottphotography.squarespace.com/>

Instagram - @selliotphoto

### Featured Items

C233 Decorated Knob

### Finish

Light Antique Brass

## Page 28

Kelly

A Side of Sweet

Instagram - @asideofsweet

### Featured Items

C233 Decorated Knob

C266 (260mm length, 26mm projection)

### Finish

Light Antique Brass





# Index

Item No	Page	Item No	Page	Item No	Page
A54	15	C205	29	C242	31
A55	15	C209	27	C243	31
A56	15	C210	33	C244	32
A57	16	C211	26	C245	32
A58	16	C217	29	C246	32
A178	11	C218	9	C247	32
A179	11	C219	9	C248	23
A198	12	C220	9	C249	11
A207	12	C221	9	C250	18
A243	21	C222	13	C251	18
A244	21	C223	7	C252	19
A261	26	C224	7	C253	24
A263	29	C225	7	C254	24
B7	16&17	C228	10	C255	30
B57	21	C229	33	C256	24
B62	21	C230	33	C257	24
C19	17	C231	33	C258	25
C20	17	C232	29	C259	25
C46	12	C233	23	C260	30
C50	12	C234	17	C261	25
C93	22	C235	18	C262	7&8
C94	22	C236	18	C263	8
C95	22	C237	10	C265	19
C96	22	C238	10	C266	8
C104	23	C239	10	C267	27
C105	23	C240	31	C268	27
C110	13	C241	31	C269	27



The items featured in this catalogue are just a small sample from our main collection.

Please visit our website:

[www.optimumbrasses.co.uk](http://www.optimumbrasses.co.uk)

and our Instagram page:

[@optimum\\_brasses](https://www.instagram.com/optimum_brasses)

# Customer Work



**Credit:** @homeinaforeignland (Instagram)

**Item(s):** C248 & C262 (round fitting)



**Credit:** Rosebank Joinery  
[www.rosebankjoinery.uk](http://www.rosebankjoinery.uk)  
@rosebank\_joinery (Instagram)  
**Item(s):** C77 (main collection stock)



**Credit:** @kate.johnsonwf (Instagram)  
**Item(s):** B7 exposed steel thread & A178



**Credit:** Gerald Weir Antiques  
[www.geraldweir.com](http://www.geraldweir.com)  
@geraldweirfurniture (Instagram)  
**Item(s):** C205 (Left) & C250 (right)









Optimum Brasses Ltd  
Unit 1, First Floor, Global Park, Station Road, Bampton, Devon, EX16 9NG  
+44 (0) 1398 331515  
[info@optimumbrasses.co.uk](mailto:info@optimumbrasses.co.uk)  
Company number 6997338