

Optimum Brasses Ltd.

Kitchen & Home Hardware
Collection



The Story

The business was founded in 1981 by Robert Byles, an antique dealer and restorer, who had been collecting original brass fittings from the 17th – 19th century, since 1966. Unhappy with the authenticity of reproduction brass available on the market at the time, he began researching ways to ‘clone’ original pieces. Following this research, it was decided that lost wax casting was the best method to achieve his desired results; Optimum Brasses was born.

The original founder and owner of Optimum Brasses continued to run the company until October 2016, at which time it became an employee owned business. Optimum Brasses continues to adopt the lost wax casting method to create faithful copies of originals and now have an archive of thousands of moulds.

Over the years, Optimum have become firm favourites in the antique restoration world and have a valued, loyal clientele. More recently, the company has made considerable progress in the world of interior design and introduced bronze & white bronze to some hardware lines. Moving forward we will to continue serving both industries with a great customer experience and high quality fixtures and fittings.

Contents

Page 7-8	Bar Handles
Page 9-11	Cup Handles
Page 11-13	Lifting & Swan Neck Handles
Page 15-19	Plain Knobs
Page 21-25	Decorated Knobs
Page 26-27	Door Knobs & Handles
Page 29-30	Hooks
Page 31-32	Tiles
Page 33	Extras
Page 34	Choosing a Brass Finish
Page 35	Bronze & White Bronze
Page 36	Credits
Page 37	Index
Page 38	Notes



The Collection



Credit: Heidi Skoglund
Full details page 36

Bar Handles



C223

Medium sized, mid 20th century style bar handle.

Length: 6 15/16" (176mm)
Width at base: 3/4" (18mm)
Width at centre: 1/2" (13mm)
Projection: 1 1/16" (26mm)
OR 1 5/16" (33mm)
Centre to Centre: 5 7/8" (149mm)
Weight: 127g
Fitted Sleeve nuts included



C224

Small mid 20th century style bar handle.

Length: 4 7/8" (125mm)
Width at base: 1/2" (14mm)
Width at centre: 3/8" (9mm)
Projection: 1" (26mm)
Centre to Centre: 4" (101mm)
Weight: 72g
Fitted Sleeve nuts included



C225

Mid 20th century style bar handle, the smallest in the collection.

Length: 4 3/8" (112mm)
Width at base: 3/4" (18mm)
Width at centre: 3/8" (10mm)
Projection: 1" (26mm)
Centre to Centre: 4" 15/16" (100mm)
Weight: 72g
Fitted Sleeve nuts included



C262 - Round Fitting

Plain curved bar handle, with round fitting design. Adapted by our engineer from a brass tile strip, this is not a copy of an antique original.

Length: 9 3/4" (246mm) **OR** 12 3/4" (323mm)
Width: 1/2" (12mm)
Projection: 1 3/8" (35mm)
Centre to Centre: 8 5/16" (185mm) **OR** 9 9/16" (217mm)
Weight: 237g **OR** 282g
Fitted Sleeve nuts included

Bar Handles



C262 - Cone Fitting

Plain curved bar handle with cone design fittings. Adapted by our engineer from a brass tile strip, this is not a copy of an antique original.

Length: 9 3/4" (246mm) OR 12 3/4" (323mm)
Width: 1/2" (12mm)
Projection: 1 3/8" (35mm)
Centre to Centre: 8 5/16" (185mm) OR 9 9/16" (217mm)
Weight: 321g OR 366g
Fitted Sleeve nuts included



C263 - Rectangular Fitting

Patterned rectangular bar handle with rectangular design fittings. Adapted by our engineer from a brass tile strip, this is not a copy of an antique original.

Length: 9 3/4" (246mm) OR 12 3/4" (323mm)
Width: 1/2" (12mm)
Projection: 1 7/16" (36mm)
Centre to Centre: 8 5/16" (185mm) OR 9 9/16" (217mm)
Weight: 255g OR 312g
Fitted Sleeve nuts included



C263 - Cone Fitting

Patterned rectangular bar handle with cone design fittings. Adapted from a brass tile strip, this is not a copy of an antique original.

Length: 9 3/4" (246mm) OR 12 3/4" (323mm)
Width: 1/2" (12mm)
Projection: 1 7/16" (36mm)
Centre to Centre: 8 5/16" (185mm) OR 9 9/16" (217mm)
Weight: 326g OR 383g
Fitted Sleeve nuts included



C266

The C266 has been cleverly formed by our workshop engineers by adapting the C223 which was originally copied from a mid 20th Century style bar handle.

Length: 9 7/8" (260mm) OR 12 1/4" (311mm)
Width at base: 3/4" (20mm)
Width at Centre: 9/16" (15mm)
Projection: 1 1/16" (26mm) OR 1 5/16" (33mm)
Weight: 174g OR 246g
Fitted Sleeve nuts included

Cup Handles



C218

A simple pull copied from a late Victorian drawer handle.

Length: 4 1/4" (106mm)
Width: 1 9/16" (39mm)
Projection: 3/4" (20mm)
Weight: 70g



C219

Copied from a 19th century cup handle with a buckle and strap pattern.

Length: 4 3/16" (105mm)
Width: 1 7/16" (37mm)
Projection: 3/4" (20mm)
Weight: 62g



C220

This decorated drawer pull is copied from a late Victorian example, found on a roll-top desk.

Length: 4 1/4" (107mm)
Width: 1 3/8" (37mm)
Projection: 3/4" (18mm)
Weight: 88g



C221

A sunburst patterned drawer pull, copied from an Edwardian original.

Length: 3 3/4" (95mm)
Width: 1 7/16" (37mm)
Projection: 11/16" (17mm)
Weight: 28g

Cup Handles



C228

Copied from a large Victorian cup handle with full surround.

Length: 4 7/8" (123mm)
Width: 3 1/16" (78mm)
Projection: 15/16" (23mm)
Weight: 199g



C237

Although not an antique copy, this beautiful brass cup handle is produced using the same process, the same signature brass mix and boasts the same high quality finish as all our other items.

Length: 3 3/16" (81mm)
Width: 1 1/2" (37mm)
Projection: 3/4" (18mm)
Weight: 23g



C238

Although not an antique copy, this beautiful brass cup handle is produced using the same process, the same signature brass mix and boasts the same high quality finish as all our other items.

Length: 3 7/16" (87mm)
Width: 1 7/16" (36mm)
Projection: 7/8" (22mm)
Weight: 48g



C239

The smallest of our cup handles. Although not an antique copy, this beautiful brass cup handle is produced using the same process, the same signature brass mix and boasts the same high quality finish as all our other items.

Length: 2 13/16" (71mm)
Width: 11/16" (27mm)
Projection: 5/8" (16mm)
Weight: 19g

Cup Handles



C249

This smooth, waved bottom cup handle is copied from a late Victorian original

Length: 3 15/16" (100mm)

Width: 1 1/4" (33mm)

Projection: 9/16" (15mm)

Weight: 53g

Lifting & Swan Neck Handles



A178

Copied from a late Georgian period original. It has large round backplates with broad moulded edges. Available with original posts or steel thread posts (as pictured) for fixing.

Backplate diameter: 1 3/8" (35mm)

Centre to centre: 4 1/4" (108mm)

Weight: 70g



A179

Copied from a late Georgian period original with oval, milled edged backplates. Available with original posts or steel thread posts (as pictured) for fixing.

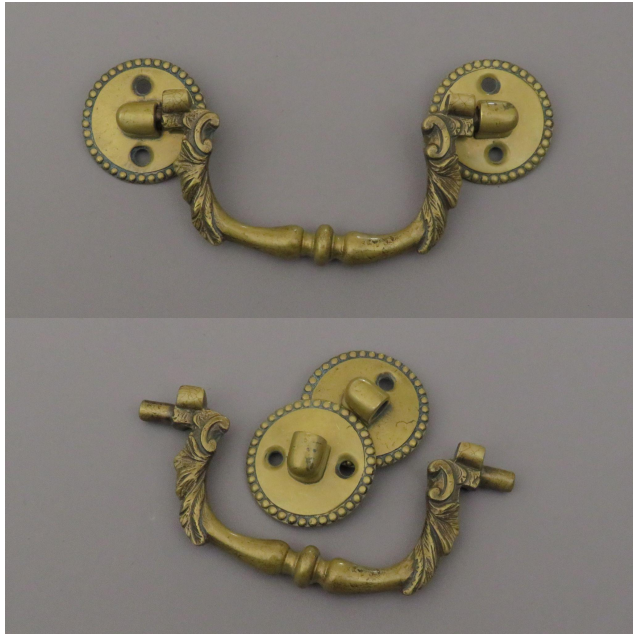
Backplate height: 1 1/2" (38mm)

Backplate width: 1 1/16" (27mm)

Centre to centre: 4 1/4" (108mm)

Weight: 70g

Lifting & Swan Neck Handles



A198

Copied from an original that we believe dates back to the 1750s. NB This handle does have a slightly asymmetrical appearance as seen in the images here.

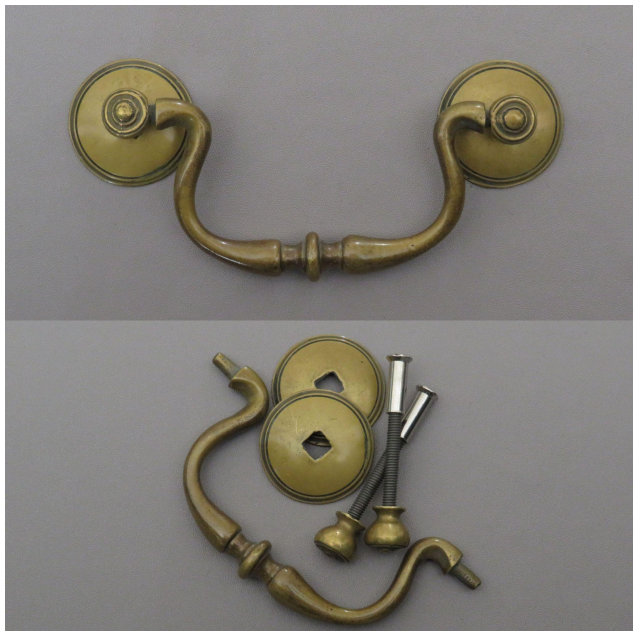
Backplate diameter: 1 15/16" (49mm)
Centre to centre: 5" (127mm)
Weight: 251g



A207

A rococo handle copied from an original dating back to the mid 18th century. It has a double sided loop and pierced foliate backplates. Available with original posts or steel thread posts (as pictured) for fixing.

Backplate height: 2 1/2" (63mm)
Backplate width: 1 1/4" (32mm)
Centre to centre: 3 3/4" (95mm)
Weight: 72g



C46

Copied from a mid 18th century knopped swan neck handle. Available with original posts or steel thread posts (as pictured) for fixing.

Backplate diameter: 1 3/16" (30mm)
Centre to centre: 3 1/2" (88mm)
Weight: 67g



C50

Copied from an original c.1770, with oval, acanthus, beaded, backplates. Available with original posts or steel thread posts (as pictured) for fixing.

Backplate height: 1 9/16" (39mm)
Backplate width: 1 1/4" (31mm)
Centre to centre: 4" (102mm)
Weight: 86g

Lifting & Swan Neck Handles



C110

Copied from a very small D shaped late 18th century handle with oval plates and integral stops to prevent the loop from lifting more than 90 degrees.

Backplate height: 1 3/16"
(30mm)
Backplate width: 7/8"
(23mm)
Centre to centre: 2 5/8"
(66mm)
Weight: 30g



C222

Copied from an early 19th century handle.

Backplate height: 1 3/4"
(44mm)
Backplate width: 1 3/16"
(30mm)
Centre to centre: 4"
(103mm)
Weight: 98g



Steel Thread Posts

A large selection of our handles now support steel thread posts, making them suitable for daily use in the home. A small number are featured in this catalogue but a full range of these handles can be found on our website in our Kitchen and Home Hardware category.





Credit: Vinycomb Bate
Full details page 36

Plain Knobs



A54

Copied from a flat headed plain knob c.1730+, adapted with a modern steel thread fitting.

Diameter: 7/8" (21mm)
Projection: 11/16" (17mm)
Weight: 21g



A55

Copied from a flat headed plain knob c.1730+, adapted with a modern steel thread fitting.

Diameter: 1 1/8" (29mm)
Projection: 15/16" (23mm)
Weight: 24g



A56 - exposed steel thread

Copied from a plain oval knob c.1690+ with a strong steel thread and integral backplate. The steel thread is exposed on the face of the knob as shown in the image.

Width x length: 1" (25mm) x 1 1/8" (30mm)
Projection: 1 3/8" (34mm)
Weight: 41g



A56 - plain

Copied from a plain oval knob c.1690+ with a strong steel thread and integral backplate.

Width x length: 1" (25mm) x 1 1/8" (30mm)
Projection: 1 3/8" (34mm)
Weight: 41g

Plain Knobs



A57

A round headed knob with backplate, the original is expected to date back to the 19th century.

Diameter: 1" (26mm)

Backplate diameter: 1 1/8" (28mm)

Projection: 1 1/16" (27mm)

Weight: 75g



A58 - exposed steel thread

Copied from an oval knob c.1690+ with a steel thread. The steel thread is exposed on the face of the knob as shown in the image.

Width x length: 1 3/16" (30mm) x 1 9/16" (39mm)

Projection: 1 5/8" (40mm)

Weight: 148g



A58 - plain

Copied from an oval knob c.1690+ with a steel thread.

Width x length: 1 3/16" (30mm) x 1 9/16" (39mm)

Projection: 1 5/8" (40mm)

Weight: 148g



B7 - exposed steel thread

Copied from an 18th century large bun knob with backplate. The steel thread is exposed on the face of the knob as shown in the image.

Diameter: 1 7/16" (36mm)

Backplate diameter: 1 7/16" (36mm)

Projection: 1 1/4" (32mm)

Weight: 150g

Plain Knobs



B7 - plain

Copied from an 18th century large bun knob with backplate.

Diameter: 1 7/16" (36mm)
Backplate diameter: 1 7/16" (36mm)
Projection: 1 1/4" (32mm)
Weight: 150g



C19

Copied from a large mushroom topped mid 18th century knob, adapted with a modern steel thread fitting.

Diameter: 1 3/16" (30mm)
Projection: 15/16" (23mm)
Weight: 36g



C20

Copied from an 18th century round knob, adapted with a modern steel thread fitting.

Diameter: 1 3/16" (30mm)
Backplate diameter: 1 3/16" (30mm)
Projection: 1 1/16" (26mm)
Weight: 36g



C234

A large plain oval knob, copied from a Victorian original, adapted with a modern steel thread fitting.

Width x length: 1 1/4" (32mm) x 2 1/4" (57mm)
Projection: 1 3/4" (43mm)
Weight: 186g

Plain Knobs



C235

A plain, mid-sized oval knob, copied from a Victorian original, adapted with a modern steel thread fitting.

Width x length: 13/16" (20mm) x 1 13/16" (45mm)
Projection: 1 7/8" (47mm)
Weight: 97g



C236

A mid-sized plain knob, copied from a Victorian original, adapted with a modern steel thread fitting.

Diameter: 1 1/16" (26mm)
Projection: 1 1/4" (31mm)
Weight: 72g



C250

Flat top with a very faint roped pattern on the outer rim. Copied from an original believed to be of the Victorian era, adapted with a steel thread for easy fitting.

Diameter: 7/8" (22mm)
Projection: 3/4" (18mm)
Weight: 27g



C251

A solid plain, hexagonal knob. Copied from an original we believe dates back to the Georgian era. Adapted with a steel thread fitting.

Diameter (edge to edge): 15/16" (22mm)
Diameter (point to point): 1" (25mm)
Projection: 1 1/16" (25mm)
Weight: 36g

Plain Knobs



C252

A plain, mid-sized round knob, copied from a Victorian original, adapted with a modern steel thread fitting.

Diameter: 1" (25mm)
Projection: 1" (25mm)
Weight: 61g



C265 - Exposed Thread

Copied from an 18th century round knob featuring two simple rings on the face, with an exposed steel thread.

Diameter: 1 1/16" (26mm)
Projection: 1 1/2" (37mm)
Weight: 88g



C265 - Plain

Copied from an 18th century round knob featuring two simple rings on the face.

Diameter: 1 1/16" (26mm)
Projection: 1 1/2" (37mm)
Weight: 88g



C270

A mid-sized plain round knob & backplate, copied from an 18th century original.

Diameter: 1 5/16" (34mm)
Backplate Diameter: 1 3/8" (35mm)
Projection: 1 1/8" (28mm)
Weight: 113g



Design: Athena Calderone Imagery: Sarah Elliot Photography
Full details page 36

Decorated Knobs



A243

Taken from a Sheraton style original c.1800, the front face is decorated with a spiral acanthus pattern & beaded rim. Adapted with a modern steel thread fitting.

Diameter: 1 1/8" (27mm)
Backplate diameter: 1 3/16" (28mm)
Projection: 3/4" (17mm)
Weight: 38g



A244

Taken from a Sheraton period furniture knob and backplate, featuring a spiral acanthus pattern and a beaded rim. Adapted with a modern steel thread fitting.

Diameter: 1 9/16" (40mm)
Backplate diameter: 1 9/16" (40mm)
Projection: 1" (25mm)
Weight: 99g



B57

Copied from a Regency original with star backplate. Available with brass thread (copied directly from the period original) or a modern steel thread fitting.

Knob Diameter: 5/8" (16mm)
Backplate Diameter: 1 1/2" (38mm)
Projection: 1/2" (13mm)
Weight: 15g



B62

Copied from an early Regency period knob with a lion face and Greek Key pattern border. Available with brass thread fitting (copied directly from the original) or a modern steel thread fitting.

Knob Diameter: 1 1/4" (32mm)
Backplate Diameter: 1 3/16" (30mm)
Projection: 7/8" (22mm)
Weight: 62g

Decorated Knobs



C93

Copied from a mid-sized late 18th century Sheraton knob; adapted with a modern steel thread fitting.

Diameter: 1 1/4" (31mm)
Backplate diameter: 1 1/4" (31mm)
Projection: 1 1/16" (26mm)
Weight: 81g



C94

Copied from a late 18th century highly decorated knob; adapted with a modern steel thread fitting.

Diameter: 1 1/16" (27mm)
Backplate Diameter: 1 5/16" (33mm)
Projection: 1 1/16" (27mm)
Weight: 63g



C95

Copied from a large Regency period original and adapted with a modern steel thread.

Diameter: 1 7/8" (46mm)
Backplate diameter: 1 15/16" (48mm)
Projection: 1 1/2" (37mm)
Weight: 206g



C96

Copied from an early 1800s original with a plain domed centre; adapted with a modern steel thread fitting.

Diameter: 1 3/16" (30mm)
Backplate diameter: 1 3/16" (30mm)
Projection: 13/16" (22mm)
Weight: 60g

Decorated Knobs



C104

Copied from a small early 1800s original with a Tudor Rose patterned front and a smaller backplate; adapted with a modern steel thread.

Diameter: 1" (25mm)
Backplate diameter: 13/16" (20mm)
Projection: 9/16" (14mm)
Weight: 17g



C105

Copied from an early 1800s Tudor Rose pattern original; adapted with a modern steel thread fitting.

Diameter: 1 1/2" (38mm)
Backplate diameter: 1 7/16" (36mm)
Projection: 3/4" (19mm)
Weight: 45g



C233

Copied from a mid-sized late 18th century Sheraton knob; adapted with a modern steel thread fitting.

Diameter: 1 5/8" (42mm)
Backplate diameter: 1 5/8" (42mm)
Projection: 1 1/8" (30mm)
Weight: 119g



C248

This solid brass knob boasts a stunningly unique oval swirl design; copied from an original we believe dates back to the Regency era. Adapted with a steel thread fitting.

Width x length: 1 9/16" (40mm) x 2 1/16" (53mm)
Projection: 1 1/2" (37mm)
Weight: 180g

Decorated Knobs



C253

Copied from a concave, dome centered knob, dating back to the early 1800s; adapted with a modern steel thread fitting.

Diameter: 1 1/4" (32mm)
Projection: 13/16" (21mm)
Weight: 45g



C254

Copied from a dome centered knob, dating back to the early 1800s; adapted with a modern steel thread fitting.

Diameter: 1 1/4" (31mm)
Projection: 1" (25mm)
Weight: 59g



C256

A relatively large decorated knob, copied from an early 19th century original; adapted with a modern steel thread fitting.

Diameter: 1 7/16" (37mm)
Projection: 1" (25mm)
Weight: 77g



C257

A highly decorated brass knob, copied from a Victorian original; adapted with a steel thread fitting.

Diameter: 1 1/4" (32mm)
Projection: 7/8" (22mm)
Weight: 66g

Decorated Knobs



C258

A delicately decorated brass knob, copied from a Victorian original; adapted with a steel thread fitting.

Diameter: 1 1/8" (29mm)

Projection: 3/4" (18mm)

Weight: 35g



C259

Copied from a dome centered knob, with an almost spinning top like resemblance; adapted with a modern steel thread fitting. We believe the original dates back to the Edwardian era.

Diameter: 1" (25mm)

Projection: 1" (25mm)

Weight: 41g



C261

Copied from an early Regency knob with a star centre and a Greek Key border, adapted with a modern steel thread.

Knob Diameter: 1 1/16" (28mm)

Projection: 11/16" (19mm)

Weight: 37g



Door Knobs & Handles



A261

A box lock door handle copied from a mid 18th century example.

You may purchase this item as standard (with small integrated backplate), or it is also available to be purchased with a steel thread and the addition of a bigger backplate for better support (fitting screws provided).

Alternatively you may purchase as a pair of door handles with backplates and spindle included.

Drop width: 2 1/8" (54mm)

Drop from axle: 1 7/8" (48mm)

Integral backplate diameter: 13/16" (20mm)

Backplate diameter: 1 13/16" (46mm)

C211

Copied from a large 18th century box lock handle with an integral back plate.

As standard this item is supplied with a removable pivot screw which also secures a shaped end of a spindle. You may purchase this item as standard or it is also available to be purchased with a steel thread and the addition of a bigger backplate for better support (fitting screws provided).

Alternatively you may purchase as a pair of door handles with backplates and spindle included.

Drop Width: 2 1/2" (64mm)

Drop from Axle: 2 1/16" (53mm)

Integral backplate diameter: 1" (25mm)

Backplate diameter: 2 1/16" (52mm)



Door Knobs & Handles



C209

Copied from an early 19th Century house door-knob and backplate with a star motif.

C210 escutcheon matches.

Knob diameter: 2" (51mm)
Projection: 1 7/8" (48mm)
Backplate diameter: 2 1/16" (52mm)
Weight: 309g



C267

This unique segmented house door knob, is copied from a period original we believe dates back to the Regency era.

Knob diameter: 2" (51mm)
Projection: 2 3/4" (70mm)
Backplate diameter: 2 1/2" (62mm)
Weight: 417g



C268

This beautiful door knob is copied from a Georgian style original. The top is adorned with a circular ring pattern which is very typical of this time period.

Knob diameter: 2 1/8" (54mm)
Projection: 2 1/2" (63mm)
Backplate diameter: 2 3/16" (55mm)
Weight: 493g



C269

This stunningly simple, oval door knob, is copied from a period original dating back to the Edwardian Era.

Knob length: 2 7/16" (61mm)
Knob width: 1 3/8" (34mm)
Projection: 2 7/16" (61mm)
Backplate diameter: 2 1/2" (62mm)
Weight: 290g



Credit: George Robinson Kitchens
Full details page 36

Hooks



A263

Dresser hook, copied from an 18th century example.

Projection: 1 3/16" (31mm)

Weight: 8g

*other hooks of this style are available in lengths between 21mm - 36mm



C205

Copied from an 18th century, rare shaped dresser hook.

Projection: 1 7/16" (36mm)

Weight: 10g



C217

Copied from a Victorian hat and coat stand hook.

Length: 4" (100mm)

Projection: 1 5/8" (93mm)

Backplate width: 1 3/16" (30mm)

Backplate height: 1 15/16" (50mm)

Weight: 84g



C232

A large coat hook, copied from a Victorian original.

Length: 5 1/4" (133mm)

Projection: 2 7/8" (74mm)

Backplate width: 1 1/2" (37mm)

Backplate height: 2" (52mm)

Weight: 146g

Hooks



C255

Although not copied from an antique, this beautifully designed S shaped hook is produced using the same process and boasts the same high quality finish as all our other items. It is made from a hard brass compound to facilitate hanging heavy items.

Length: 2 1/8" (53mm)
Inside radii: 3/4" (20mm) & 5/8" (16mm)
Weight: 19g



C260

Copied from an antique original we believe dates back to the Victorian era.

Projection: 5 5/8" (144mm)
Backplate diameter: 1 3/4" (44mm)
Circle head diameter: 1 1/4" (30mm)
Weight: 196g



Tiles

Brass Tile Collection

Although not copied from antique originals, these beautiful brass tiles and tile strips are produced using the same process, the same signature brass mix and boast the same high quality finish as all our other items. They are perfect for use as accent tiles on walls, floors or statement pieces of furniture.



C241

Brass tile.

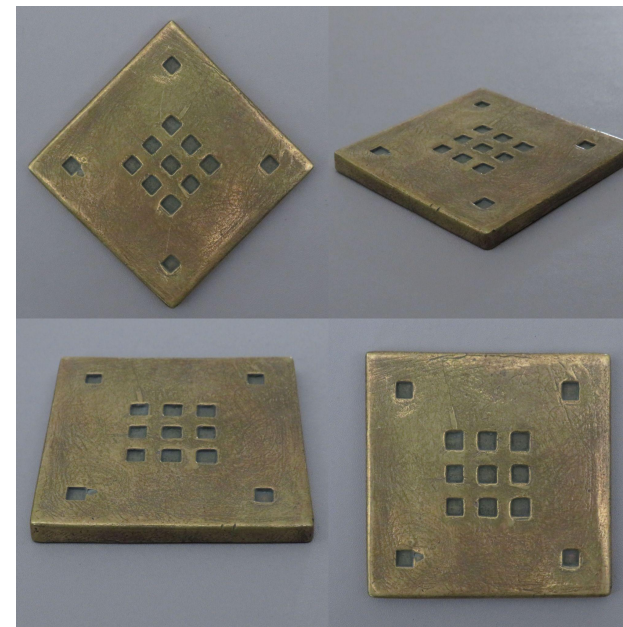
Length: 3" (75mm)
Width: 3" (75mm)
Depth: 1/4" (6mm)
Weight: 253g



C240

Small brass tile.

Length: 1 1/8" (29mm)
Width: 1 1/8" (29mm)
Depth: 1/4" (6mm)
Weight: 49g



C242

Brass tile.

Length: 3" (75mm)
Width: 3" (75mm)
Depth: 1/4" (6mm)
Weight: 279g

Tiles



C243

Brass tile.

Length: 3" (75mm)
Width: 3" (75mm)
Depth: 1/4" (6mm)
Weight: 277g



C244

Brass tile.

Length: 3" (75mm)
Width: 3" (75mm)
Depth: 1/4" (6mm)
Weight: 256g



C245

Brass tile.

Length: 3" (75mm)
Width: 3" (75mm)
Depth: 1/4" (6mm)
Weight: 291g



C246 & C247

Brass tile edging strips.

C246

Length: 9 3/4" (246mm) OR
 12 3/4" (323mm)
Width: 1/2" (12mm)
Depth: 7/16" (10mm)
Weight: 203g

C247

Length: 9 3/4" (246mm) OR
 12 3/4" (323mm)
Width: 1/2" (12mm)
Depth: 3/8" (9mm)
Weight: 208g



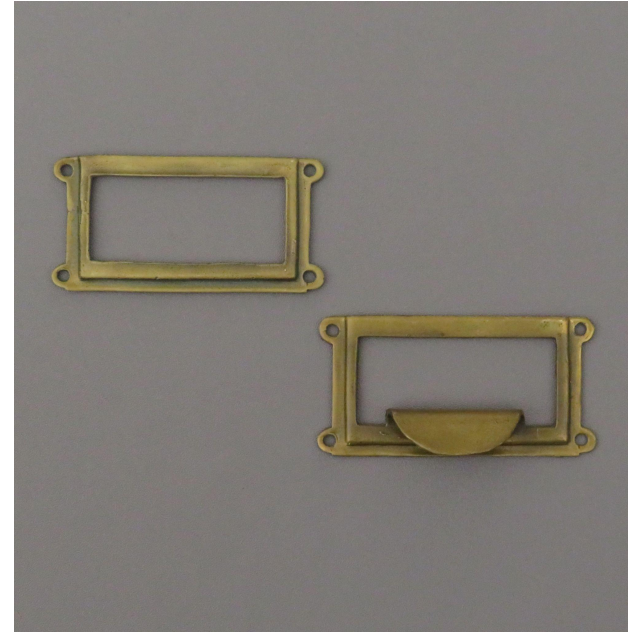
C210

A covered escutcheon copied from an early 19th Century original for a house door, matches the C209 door knob (page 27). Comes complete with wood screw for fitting.

Height: 2 3/8" (60mm)

Width: 1 1/16" (27mm)

Keyhole Height: 1 1/16" (27mm)



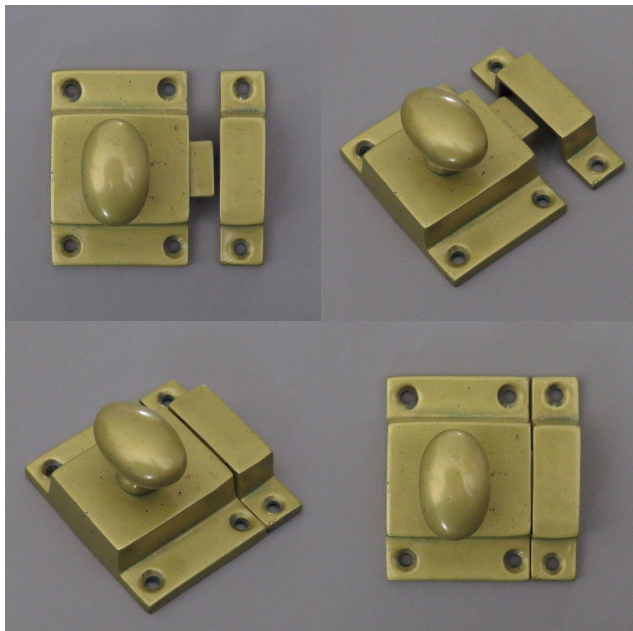
C229 (with pull) & C230 (without pull)

These Card holders were both copied from originals belonging to a vintage filing cabinet.

Width: 1 1/4" (30mm)

Length: 2 1/2" (65mm)

Weight: 13g (with pull) 10g (without pull)



C231

Although not copied from an antique, this latch is produced using the same process, signature brass mix and boasts the same high quality finish as all our other items. Our engineer has modified the original design, resulting in a stronger, more robust final product.

Width: 2" (52mm)

Length: 2 1/8" (55mm)

Projection: 1 1/8" (33mm)



Brass Finishes

Optimum Brasses offer the choice of three unlacquered brass finishing options; traditional antique, light antique & polished brass. Our traditional antique finish is what really makes our items stand out within the industry and the reason many customers return to us time and time again.

All the items featured in this catalogue are finished in either light or traditional antique, below are a selection of our pieces in all three finishes for comparison. Please bear in mind that different lighting/camera angles can affect the way the colour of the brass appears and each item antiques slightly differently.

**Traditional Antique
Finish**



**Light Antique
Finish**



Polished Finish



Bronze & White Bronze Finishes

Optimum Brasses are now pleased to be able to offer a number of our items in bronze & white bronze; a selection of these items are already available to order direct from our website. Whilst we will continue to add to this online selection, we encourage you to enquire about any other items you may wish to purchase in bronze or white bronze, as it is possible for most items in our main collection to be cast in these materials.

We are able to offer bronze and white bronze in two finishes; tumbled and polished, examples of which can be seen in the images below.



Featured Images

Front Page

Artichoke Ltd

www.artichoke-ltd.com/newprojects
@artichoke.co.uk

+44(0)1934 745 270

Instagram - [@artichoke_ltd](#)

Featured Item

C228 cup handle

Finish

Light antique brass

Page 6

Heidi Skoglund

Instagram - [@heidi__skoglund](#)

Featured Items

C266 bar handle

C224 bar handle

C254 decorated knob

Finish

Light antique brass

Page 14

Vinycomb Bate

sb@vinycombbate.com

+44(0)1452 724555

Instagram - [@vinycombbate](#)

Featured Item

C218 Cup Handle

Finish

Light Antique

Page 20

Interior Design

Athena Calderone

www.athenacalderone.com

Instagram - [@eyeswoon](#)

Imagery

Sarah Elliott Photography

<http://sarahelliottphotography.squarespace.com/>

Instagram - [@selliotphoto](#)

Featured Items

C233 Decorated Knob

Finish

Light Antique

Page 28

George Robinson Kitchens

www.georgerobinsonkitchens.co.uk/

info@georgerobinsonkitchens.co.uk

+44(0)1736 367369

Instagram - [@grkitchens](#)

Featured Items

C220 Cup Handle

C19 Plain Knob

Finish

Light Antique

Index

Item No	Page	Item No	Page	Item No	Page
A54	15	C205	29	C242	31
A55	15	C209	27	C243	32
A56	15	C210	33	C244	32
A57	16	C211	26	C245	32
A58	16	C217	29	C246	32
A178	11	C218	9	C247	32
A179	11	C219	9	C248	23
A198	12	C220	9	C249	11
A207	12	C221	9	C250	18
A243	21	C222	13	C251	18
A244	21	C223	7	C252	19
A261	26	C224	7	C253	24
A263	29	C225	7	C254	24
B7	16&17	C228	10	C255	30
B57	21	C229	33	C256	24
B62	21	C230	33	C257	24
C19	17	C231	33	C258	25
C20	17	C232	29	C259	25
C46	12	C233	23	C260	30
C50	12	C234	17	C261	25
C93	22	C235	18	C262	7&8
C94	22	C236	18	C263	8
C95	22	C237	10	C265	19
C96	22	C238	10	C266	8
C104	23	C239	10	C267	27
C105	23	C240	31	C268	27
C110	13	C241	31	C269	27



The items featured in this catalogue are just a small sample from our main collection.

Please visit our website:

www.optimumbrasses.co.uk

and our Instagram page:

[@optimum_brasses](https://www.instagram.com/optimum_brasses)



Optimum Brasses Ltd
Unit 1, First Floor, Global Park, Station Road, Bampton, Devon, EX16 9NG
+44 (0) 1398 331515
info@optimumbrasses.co.uk
Company number 6997338